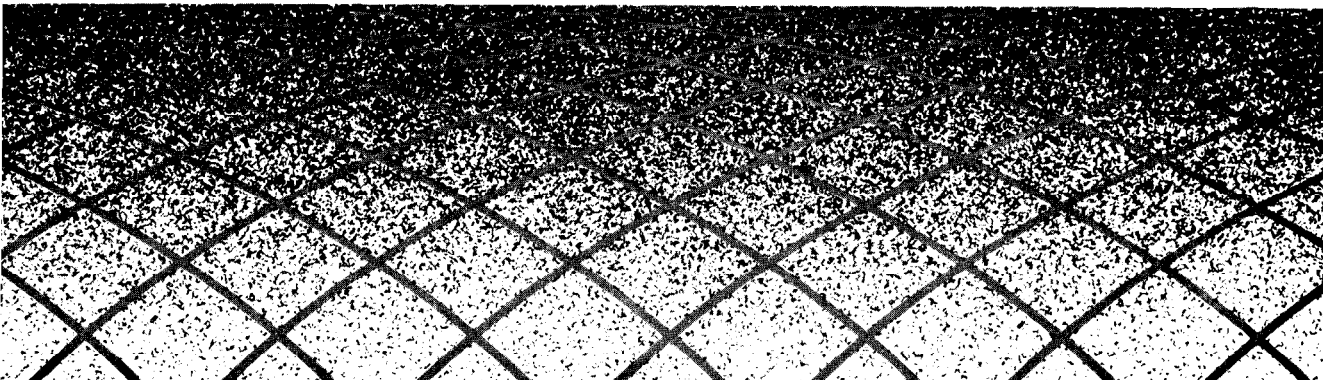




# Security System 8000

Owner's Manual



# Contents

---

<b>Introduction</b> .....	<b>1</b>
<b>Safety Procedures</b> .....	<b>2</b>
Safety Planning .....	<b>2</b>
Fire Protection .....	<b>3</b>
<b>System Operation</b> .....	<b>5</b>
Sensors .....	<b>5</b>
Wireless System Keypad (Wireless Remote Transmitter) .....	<b>6</b>
When Leaving Home .....	<b>7</b>
When Returning Home .....	<b>8</b>
Turning Your System Off .....	<b>8</b>
Sounding a Panic Alarm .....	<b>8</b>
Opening a Door or Window When the System is Armed .....	<b>9</b>
<b>Alarms and Trouble Beeps</b> .....	<b>10</b>
Alarms.. .....	<b>11</b>
Trouble Beeps .....	<b>14</b>

# Contents

---

<b>Components .....</b>	<b>18</b>
Central Controller.. .....	18
The Wireless System Keypad (Wireless Remote Transmitter) .....	20
Wireless Local Keypad (Keypad Transmitter) .....	21
Supervised Smoke Detector .....	22
Universal Transmitter.. .....	25
Passive Infrared Transmitter (PIRT) .....	26
Wireless Siren/Controller .....	27
<b>Testing and Maintenance .....</b>	<b>28</b>
Replacing Batteries in Keypads and Universal Transmitters .....	28
Replacing PIRT Batteries .....	29
Replacing Smoke Detector Batteries .....	30
Replacing Wireless Siren/Controller Batteries .....	31
Weekly System Test .....	32
<b>Warranty .....</b>	<b>35</b>
<b>FCC Registration and Repair Information..</b>	<b>36</b>
<b>Index .....</b>	<b>39</b>
<b>Quick Reference .....</b>	<b>inside back cover</b>
<b>Transmitter Identification Numbers .....</b>	<b>back cover</b>

# Introduction

---

Congratulations on the purchase of your new AT&T Security System 8000. Your dealer has demonstrated the correct way to operate your new system. Use this booklet as a reference when you have questions about its operation or maintenance.

Remember, no security system prevents emergencies. Instead, a security system alerts you and your family in the event of an emergency. Your AT&T Security System 8000 cannot be a substitute for sound safety practices or insurance. Contact your insurance company to inform them that you have installed a security system-you may be entitled to a reduction in premiums.

## **In Case of Emergency**

Contact your local police department, fire department, and alarm dealer for advice on handling household emergencies. Ensure that every member of your household knows exactly what to do if an emergency occurs.

**This AT&T security system is suitable for use as a Grade A Household Burglary Warning System (UL1023).**

847 238 771

# Safety Procedures

---

## Safety Planning

**Plan in advance how each member of your family should respond to an alarm.** Discuss the different alarm signals, make sure each person is familiar with them, and make a plan for each person. If you have children, be sure that you instruct them carefully and that they understand. Establish a meeting place outside the house, so you can account for everyone in case of fire or other emergency. Practice safety procedures so that everyone can respond quickly in a crisis.

**In case of a fire alarm, every member of your family should leave the house immediately** by way of planned escape routes and meet at a planned location.

## Returning Home to an Audible Alarm

If you return home to an audible alarm, do not enter your house. You might be walking into a fire or an intruder might still be inside. Go to a neighbor or public phone and call the fire department or police.

## Using the Universal Transmitter as a Panic Button

Press *Alarm* on the Universal Transmitter and hold it down for 2 seconds.

## Testing Your Alarm System Weekly

Test your wireless alarm system every week, using the procedures on page 32. To prevent false alarms, check with your dealer before testing.

# Safety Procedures

---

## Fire Protection

### To Reduce the Risk of Fire

Minimize hazards:

- Store flammable materials properly. Avoid cleaning with flammable liquids such as gasoline. If at all possible, eliminate explosive or fast-burning materials from your home.
- Use good housekeeping techniques. A cluttered attic, basement, or storage area increases the risk of fire.
- Never smoke in bed.
- Do not leave children unattended.
- Do not overload electrical outlets.

If you have children or invalids in your home, the fire department can provide you with window decals that will show the fire department where to look first in the event of a fire.

### If the Smoke Alarm “Beeps” Repeatedly

The Supervised Smoke Detector beeps once every 7 seconds when the batteries are low. Replace the batteries immediately (see page 30).

### If the Smoke Alarm Is Triggered

Smoke detectors warn you of a fire in its early stages, so that you can escape from your house before smoke reaches a dangerous concentration level.

# Safety Procedures

---

When the smoke alarm is triggered, the smoke detector's internal siren sounds and the smoke detector transmits the alarm to the Central Controller. Also, the **On/Alarm** light in the center of the Supervised Smoke Detector Transmitter glows steadily. (During normal operation, this **On/Alarm** light flashes about once every 7 seconds.) Immediately follow the evacuation instructions given below. If your security system is connected to a central monitoring service, an emergency call will be initiated.

## Evacuation Procedures

- Do not panic-escape may depend upon clear thinking.
- Get out of the house following planned escape routes, if possible. Do not stop to dress or collect valuables.
- Open doors carefully only after feeling them to see if they are hot. If a door is hot, do not open it-follow an alternate escape route.
- Keep close to the floor-smoke and hot gases rise.
- Keep doors and windows closed unless it is necessary to open them to escape.
- Meet at a pre-established meeting place after leaving your house.
- Never re-enter a burning building. Use a neighbor's phone or a street fire alarm box to call the fire department.

# System Operation

---

## Sensors

The AT&T Security System 8000 consists of various types of sensors. These sensors are attached to transmitters that report to the Central Controller. These sensors are set in one of the following ways:

- **24-Hour** sensors are always armed. You cannot turn these sensors off. Smoke detectors, environmental and auxiliary sensors are 24-hour sensors.
- **Perimeter** sensors are usually located at windows and exterior doors. These sensors are armed when your system is in the HOME or AWAY mode.
- **Interior** sensors are only armed when the system is in the AWAY mode. These sensors are usually motion detectors or intrusion sensors on interior doors.



# System Operation

---

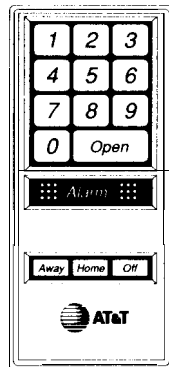
## Wireless System Keypad (Wireless Remote Transmitter)

In order to operate your system correctly, you should be familiar with the Wireless System Keypad. Please read this section carefully and keep it handy as a reference source.

**NOTE:** You need the security code to operate any keypad. When your dealer tells you the security code, write it down and store it safely. DO NOT WRITE YOUR SECURITY CODE IN THIS BOOK OR ANYWHERE THAT AN INTRUDER COULD FIND IT.

The Wireless System Keypad enables you to set your system to Home, **Away**, or **Off**. It also enables you to open any door or window that is connected to this keypad. The keypad can also be used to generate a Panic Alarm in an emergency.

The Wireless System Keypad is usually mounted at the principle access door, but additional units can be converted for use as portable keypads.



# System Operation

---

## When Leaving Home

- 1 Enter your security code on the Wireless System Keypad attached to the door from which you will be leaving. The transmitter beeps once after each number you enter and will beep three times after the entire code is entered correctly.
- 2 Press **Away**. If the Central Controller beeps once, the system is secure -continue to step 3. If the Central Controller beeps four times, one or more of the transmitters is not secure. Go to the Central Controller to find out where the problem exists. Check to see if:
  - a window or door is open
  - a keypad is disarmed
  - the cover is off one of the transmitters
  - a transmitter has been tampered with
  - something is triggering a motion detector.

If you correct the problem, the Central Controller will beep once when you arm the system. If you do not correct the problem, the system will arm itself within 40 seconds, but the alarm point that caused the problem will remain unprotected.

- 3 Press **Open** and then go out the door and close it. The system will arm itself in about 40 seconds. If you do not leave within 40 seconds, enter your security code and press **Open**. You can exit through that door and the system will remain armed.

# System Operation

## When Returning Home

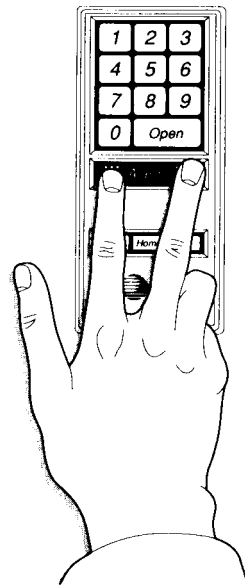
- 1 Enter your home through a door that is close to a Wireless System Keypad. The Central Controller will begin beeping at an interval of once every three seconds.
- 2 Enter your security code on the keypad within 40 seconds of entering the door. This will cancel the delayed alarm.
- 3 Press **Home**. This will disable all Interior sensors. The Central Controller will beep once to indicate the change in status.

## Turning Your System Off

- 1 Enter your security code on the Wireless System Keypad. The keypad will beep three times when the code is entered correctly.
- 2 Press **Off**. All internal and perimeter sensors are deactivated. All 24-hour sensors (fire, auxiliary, environmental, tamper and panic) remain armed. The Central Controller will beep once to indicate the change in status.

## Sounding a Panic Alarm

Simultaneously press **both** sets of red dots in the Alarm area of any keypad (see illustration). This will immediately sound an intrusion alarm and activate your telephone dialer.



# System Operation

---

## Opening a Door or Window When the System Is Armed

- 1 Enter your security code on the Wireless System Keypad .
- 2 Press **Off** to disarm the system.
- 3 Open the door or window.
- 4 Rearm your system. The Central Controller will beep four times because of the open door or window. The system will be armed but the sensor at the open door or window will be unprotected. When you close the door or window the sensor will be reaccepted into the system immediately.

**NOTE:** If there is a Wireless System Keypad or a Wireless Local Keypad attached to the door or window sensor:

- 1 Enter your security code.
- 2 Press **Open**. The transmitter will beep three times.
- 3 Open the door or window within 40 seconds after pressing **Open**. You can leave the door or window open as long as you like. When you close it, the sensor will be reaccepted into the system.

# Alarms and Trouble Beeps

The System 8000 generates two types of warnings: alarms and trouble beeps. The following chart will help you distinguish between these warnings.

This Pattern	Means
2 short beeps every 40 seconds	<b>Trouble Beeps-A</b> system problem has been detected. Your system is still operable, but the problem should be corrected as soon as possible (see page 14).
steady, uninterrupted tone	<b>Fire Alarm-Either the Smoke</b> Detector Transmitter or a transmitter configured for fire emergency has been triggered. Your system will sound this alarm and activate your telephone dialer. Depending on your programming, there may be a 40-second delayed alarm from external sirens.
repeating pattern: long tones only	<b>Intrusion Alarm-A door or window</b> has been opened or broken; a motion detector has been triggered; or a tamper switch has been activated. Your system will sound this alarm and activate your telephone dialer, unless the keypad is <b>set on the 40-second delay</b> .
repeating pattern: one long tone, 3 short tones	<b>Auxiliary Alarm-An auxiliary transmitter</b> has been triggered. Your system will sound this alarm and activate your telephone dialer.
repeating pattern: 8 short tones	<b>Environmental Alarm-A sensor</b> has been triggered by heat, cold, moisture, etc. Your system will sound the alarm and activate your telephone dialer. External sirens are silent.

**NOTE:** Your system may not be equipped for all these alarms. Ask your dealer which alarms are included in your system.

# Alarms and Trouble Beeps

---

## Automatic Disarm Period

After your system sounds a fire, environmental, or auxiliary alarm, it will not repeat the same kind of alarm for five minutes. This Automatic Disarm Period gives you time to clear away smoke or otherwise tend to the emergency, without having another alarm of this type go off. During this period, **AA** will be displayed at the Central Controller.

## Silencing Alarms

To silence any alarm, enter your security code on a keypad. This will silence an alarm that is already sounding and will cancel a delayed alarm that has not yet sounded. You can cancel any type of alarm this way—fire, intrusion, environmental, or auxiliary.

The Cancel key on your Central Controller will cancel a fire, environmental, or auxiliary alarm, but it will not **cancel** an intrusion alarm. Intrusion alarms can only be cancelled by entering your security code on a keypad.

**NOTE:** If a false alarm occurs and your system is equipped with a telephone dialer, call your monitoring service to inform them that there is no emergency.

# Alarms and Trouble Beeps

---

## The Ambush Feature

The Ambush Feature is designed to protect you in the event that you must unwillingly cancel an intrusion alarm. Should an intruder force you to cancel an alarm, enter your security code backwards on the keypad. For example, if your code is 7-6-4, enter 4-6-7.

The audible alarm will immediately go silent, but your Central Controller will continue to dial your monitoring service and will report a special Ambush alarm. During this period, all other system functions - such as changing states - will operate normally.

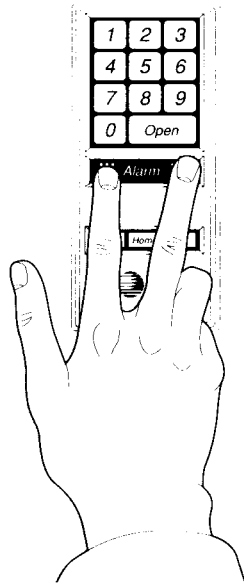
**NOTE:** If you are not connected to a monitoring service this feature is not included in your system.

## Sounding a Panic Alarm

If an intruder is attempting to enter your house, you can trigger the alarm immediately-even before the intruder sets off the alarm at a door or window.

Simultaneously press **both** sets of red dots in the Alarm area of any keypad (see illustration). This will sound an intrusion alarm and activate your automatic telephone dialer.

In many installations, Universal Transmitters are also set up as Panic Alarms. To activate the Panic Alarm on the Universal Transmitter, press the button and hold it down for 2 seconds.



# Alarms and Trouble Beeps

---

## Trouble Beeps

If your Central Controller starts to beep twice every 40 seconds, NO ALARM IS SOUNDING. The system is sounding Trouble Beeps to alert you to a problem it has detected. Trouble beeps can come from the Central Controller (see below), from the Wireless Siren/ Controller (see page 17), or from a Smoke Detector (see page 17).

### When You Hear Trouble Beeps from the Central Controller

- 1 Press **Test/Demo** on your Central Controller. This will silence the beeps.
- 2 Press Messages once. This will display any trouble messages detected by the Central Controller.
- 3 Check the digital display to see where the problem is. If the display shows

This Display	Means
0 through 31	There is a problem with a numbered transmitter. Check the list of numbers on the back cover of this booklet to identify the transmitter.
CC	There is a problem with your Central Controller (see page 18).

(Continued)



# Alarms and Trouble Beeps

---

(Continued)

4 Check the Indicator Light to determine what the problem is.

This Light	Means
<b>Alarm</b>	The transmitter shown in the display has recently registered an alarm that has not been canceled. If you cannot account for a recent alarm, contact your dealer immediately.
<b>No Check In</b>	The transmitter has not checked in with the Central Controller during the Controller's normal supervisory time. Replace the battery in the affected transmitter (see pages 28-31). If that doesn't correct the problem, have your dealer check the transmitter for problems.
<b>Low Battery</b>	The unit indicated in the display needs a new battery (see pages 28-31).
<b>AC Power</b>	This light should be on. If it is not, the power supply to the Central Controller has been interrupted and your system is running on backup batteries. (This will not be the cause of the trouble beeps, unless the backup batteries are running low.) Check your household fuses or circuit breakers for the source of the power interruption. The backup <b>batteries will recharge once power is reestablished.</b>

(Continued)

# Alarms and Trouble Beeps

---

NOTE: If **AC Power** is the only indicator light on, the device shown in the display is NOT SECURE-it may be disarmed or its sensor may be open. This will not cause trouble beeps, but the Central Controller will beep four times when you try to set your system to **HOME** or **AWAY**.

- 5 Press **Messages** again to check for additional problems. The system will display additional trouble messages, if there are any, each time you press **Messages**.  
When the digital display shows **-A**, **-0**, or **-H**, (**Away**, **Off**, or **Home**), you have seen all the trouble messages. To run through them again, press **Messages**.
- 6 Press **Messages** until the display shows **-A**, **-0**, or **-H**. This will silence the trouble beeps unless the system detects a new problem. The trouble messages will stay in the Central Controller memory until you clear them.
- 7 After you have corrected the problem, press **Clear Display** to erase the trouble messages shown in the digital display. Trouble messages can only be erased if the problem has been fixed.

# Alarms and Trouble Beeps

---

## **When you hear Trouble Beeps from the Wireless Siren/Controller**

Press Test/Demo on the Central Controller to silence the trouble beeps. When you press Test/Demo, each Wireless Siren/Controller will respond 1,4,8, or no beeps.

1 beep means – the Wireless Siren/Controller is okay.

4 beeps mean - the Wireless Siren/Controller needs new batteries.

See page 31 for instructions on replacing batteries.

8 beeps or no beeps mean – a problem with the radio link between the Central Controller and the Wireless Siren/Controller.  
Call your dealer for assistance.

If the Test/Demo button fails to silence the trouble beeps at a Wireless Siren/Controller, go to that unit, remove its cover by lifting it up and away from the bottom, and press the area marked Cancel.

## **When you hear Trouble Beeps Directly from a Smoke Detector**

The batteries in the smoke detector need to be replaced (see page 30).

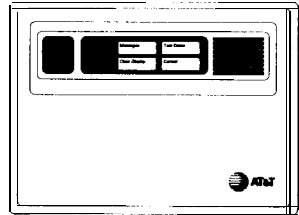
The smoke detector's internal warning signal will sound before sending a low battery signal to the Central Controller.

# Components

Different systems offer different selections of components to meet your specific needs. Your dealer will let you know what components are in your system.

## Central Controller

The Central Controller is the brain of the system. When a transmitter broadcasts an alarm, the Central Controller sounds the audible alarm. It can also sound an alarm outside the home with optional sirens, and inside the home with the optional Wireless Siren/Controller. If your system is equipped with a telephone link, the Central Controller will also report all alarms to your monitoring service.



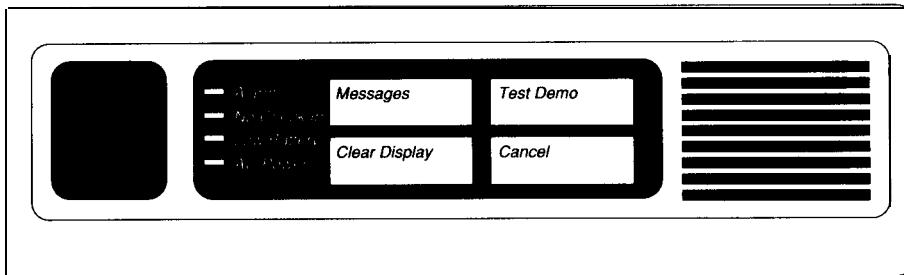
This Display	Means
-O	Your system is OFF.
-H	Your system is set to <b>HOME</b> .
-A	Your system is set to <b>AWAY</b> .
0 through 31	There is an alarm or a problem with a numbered transmitter. Check the list of numbers on the back cover of this booklet to identify the transmitter, and use the indicator lights to help identify the problem.
	There is a problem with your Central Controller. Check the indicator lights to see what the problem is. Call your dealer if you cannot determine the cause of the problem.

# Components

---

If there is trouble with your system, Indicator Lights will tell you what the problem is. See page 15 for what each Indicator Light means.

- Press **Messages** to see if any trouble conditions or alarms have occurred (see page 14).
- Press **Clear Display** to erase records of alarms and trouble messages.
- Press **Test/Demo** to silence trouble beeps (see page 14). This button is also used during a test or demonstration (see page 32). This button will not cancel an intrusion alarm.
- Press **Cancel** to cancel an accidental alarm (see page 12). This button will not cancel an intrusion alarm.



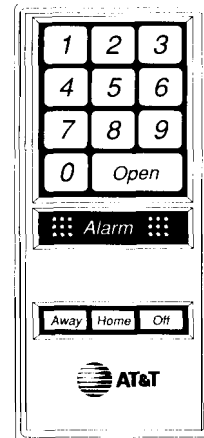
# Components

---

## The Wireless System Keypad (Wireless Remote Transmitter)

The Wireless System Keypad transmits commands to the Central Controller. It may be mounted on a wall and connected to one or more intrusion sensors, or it can be used as a portable device.

- Number Keys are used to enter your security code-either to cancel an alarm or to use other buttons (see page 7).
- **Open** enables you to open a door or window connected to the keypad without setting off an alarm (see page 9).
- **Alarm** sets off an immediate Panic alarm when both sets of dots are pressed simultaneously.
- **Away, Home, and Off** let you arm and disarm various sensors in your system (see page 7).



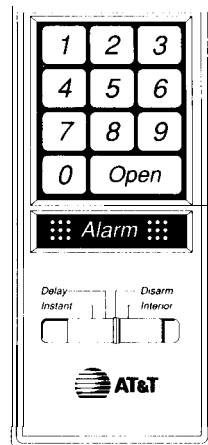
# Components

## Wireless Local Keypad (Keypad Transmitter)

The Wireless Local Keypad enables you to change the settings of the door controlled by this keypad. Like the Wireless System Keypad, it can also cancel an alarm, generate a Panic Alarm, and generate an Ambush Alarm, if your system is equipped with this feature. To change the settings of the Wireless Local Keypad:

- 1 Enter your security code on the keypad.
- 2 Move the slide switch to the setting you want. The settings are:
  - **Instant** - The sensor attached to this keypad will generate an immediate alarm when your system is in the **AWAY** or **HOME** mode.
  - **Delay** - The sensor attached to this keypad will generate a 40-second delayed alarm when your system is in the **AWAY** or **HOME** mode. During the delay the Central Controller will beep every 3 seconds. Use this setting if you intend to use this door to enter your home.
  - **Interior** - The sensor attached to this keypad will generate an alarm only when your system is in the **AWAY** mode. It is disarmed when your system is set to **HOME**.
  - **Disarm** The sensor attached to this keypad is disarmed even if your system is set to **HOME** or **AWAY**.

**NOTE:** Setting the Wireless Local Keypad to Disarm does not disarm the **Panic Alarm** feature, the tamper detector, or any 24-hour sensors that are connected to the transmitter. However, if you try to arm the system when a keypad is set to Disarm, the Central Controller will beep 4 times to indicate that the transmitter is not secure.



# Components

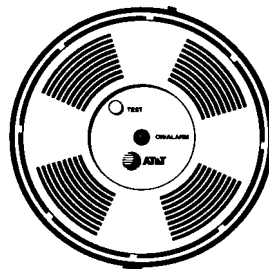
---

## Supervised Smoke Detector

The AT&T Supervised Smoke Detector is a photoelectric type, designed to detect a fire in its early stages so that you can escape from your house before smoke reaches a dangerous concentration level. When the detector senses smoke particles, it simultaneously sounds an alarm (using a built-in siren) and sends an alarm to the Central Controller.

During normal operation, the **On/Alarm** light in the center of the smoke detector flashes once every 7 seconds. During an alarm, it remains lighted. Pressing and holding **Test** for approximately 20 seconds checks the operation of the smoke detector.

**NOTE:** When the smoke detector batteries are low, a built-in horn beeps once every 7 seconds. If the batteries are not replaced, the smoke detector will send a message to the Central Controller. See 30 for instructions on battery replacement.



**MODEL 8520**

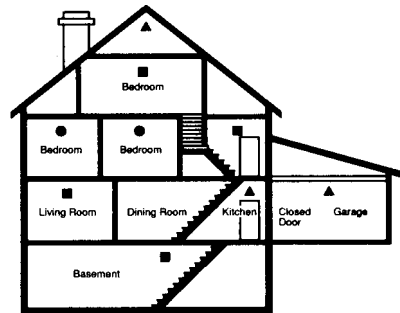


# Components

## NFPA Recommendations for Detector Installation

The National Fire Protection Association's Standard 74, Section 2-1, reads as follows:

2-1.1.1: Smoke detectors shall be installed outside of each separate sleeping area in the immediate vicinity of the bedrooms and on each additional story of the family living unit, including basements and excluding crawl spaces and unfinished attics. The provisions of 2-1.1.1 represent the minimum number of detectors required by this standard. It is recommended that the householder consider the use of additional smoke or heat detectors for increased protection for those areas separated by a door from the areas protected by the required smoke detectors under 2-1.1.1 above. The recommended additional areas are: living room, dining room, bedroom(s), kitchen, attic (finished or unfinished), furnace room, utility room, basement, integral or attached garage, and hallways not covered under 2-1.1.1 above. However, the use of additional detectors remains the option of the householders.



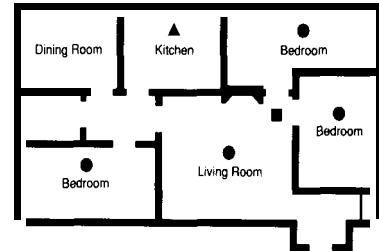
*Typical Multi-Floor Installation*

- Smoke detector for minimum protection
- Smoke detector for additional protection
- A Heat-activated detectors

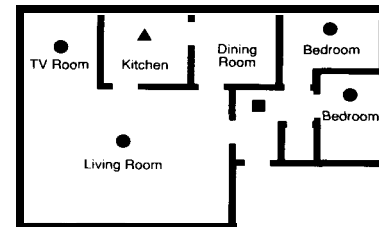
# Components

## NOTES:

- The Central Controller has a 3-AG 3/4-amp fuse on the external siren leads. If the external sirens do not sound when they should, the fuse may need replacing.
- Underwriter's Laboratory requires the use of a UL-listed, single station smoke detector with a relay connected to a universal transmitter in fire applications.
- UL requires that any fire application includes either a supervised smoke detector transmitter, or a universal transmitter configured for fire and connected to a UL-listed, single station smoke detector with relay. Other types of smoke/fire sensors (such as heat sensors) may be included in the system.



*Typical Single-Floor Installation-  
One Bedroom Area*



*Typical Single-Floor  
Two Bedroom Areas*

# Components

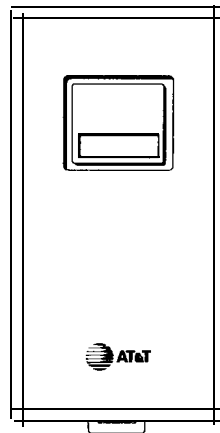
---

## Universal Transmitter

Transmitters are used differently in each system and are preset by your dealer. The back cover of this manual lists each transmitter and where it is located.

Transmitters may be mounted on walls and connected to smoke or fire sensors, intrusion sensors, or other sensors. They can also be set up as portable units that you can carry with you.

The button on the Universal Transmitter can either be a Test or Alarm button. To activate the button, press and hold it for 2 seconds.



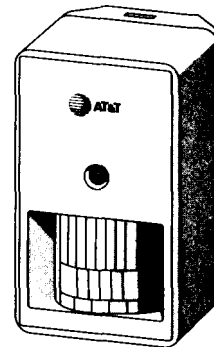
# Components

## Passive Infrared Transmitter (PIRT)

The PIRT is a space protector which detects intruders by measuring changes in heat patterns. When the PIRT detects an intruder, it transmits an alarm to the Central Controller. Most PIRTs are interior sensors and are only armed when your system is set to Away.

The PIRT is used in areas which would be difficult to protect with other types of sensors or as additional protection against intrusion. It is usually mounted on a wall to monitor an entire room or hallway.

**NOTE:** The PIRT sends an alarm signal when it first detects motion and will not send another until it resets itself. The PIRT will reset itself only after it does not detect any movement for 2-1/2 minutes.



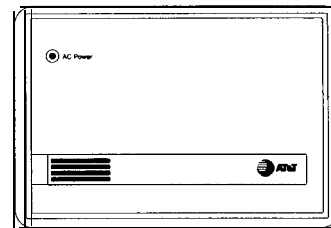
# Components

---

## Wireless Siren/Controller

This is an extension siren for remote areas of your home. It echoes trouble beeps and alarms sounded at the Central Controller. It also controls any optional sirens mounted inside or outside your home.

The Wireless Siren/Controller operates on household power, but automatically switches to a backup battery during a power failure. To conserve backup power, the controller will not activate the external sirens when battery-operated.



# Testing and Maintenance

## Replacing Batteries in Keypads and Universal Transmitters

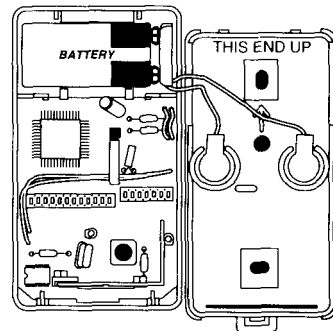
Batteries should be replaced whenever they are low. Test the Universal Transmitter weekly to be sure it is working properly (see page 32 for the procedure used to test the transmitter battery power and operation).

### To Replace Batteries:

- 1 Put your system in the DEMONSTRATION mode. (Set the system to **Off**, then press and hold **Test/Demo** on the Central Controller for 3 seconds.)
- 2 To remove the transmitter cover, press upward on the release tab at the bottom of the transmitter. Remove the transmitter cover by lifting it up and out at the bottom.

**NOTE:** This will set off an alarm, but since the system is in the DEMONSTRATION mode, it is only a test alarm. It will sound at a lower volume and will not activate your telephone dialer or any external sirens. Cancel the test alarm if you wish.

- 3 Remove the battery and discard it.
- 4 Replace the battery with a 9-volt battery (Duracell MN1 604, or Eveready 522). Attach the battery lead and set battery into the transmitter body.
- 5 Re-attach transmitter cover to the backplate.
- 6 Test transmitter to be sure it operates properly (see page 32).
- 7 Take your system out of the DEMONSTRATION mode by pressing **Test/Demo** on the Central Controller. The system will automatically return to normal operation if no activity occurs within 10 minutes while in the DEMONSTRATION mode.



# Testing and Maintenance

## Replacing PIRT Batteries

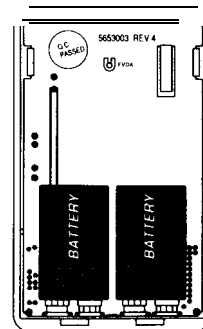
Batteries should be replaced whenever they are low. Test the PIRT weekly to be sure it is working properly (see page 32 for procedures used to test PIRT battery power and operation).

### To Replace Batteries:

- 1 Put your system in the DEMONSTRATION mode. (Set the system to Off, then press and hold **TestDemo** in the Central Controller for 3 seconds.)
- 2 Use a coin to press down on the PIRT release tab (located in a slot at the top of the backplate). Pull the top of the backplate away from the transmitter body to release it.

**NOTE:** This will set off an alarm, but since the system is in the DEMONSTRATION mode, it is only a test alarm. It will sound at a lower volume and will not activate your telephone dialer or any external sirens. Cancel the test alarm if you wish.

- 3 Remove the PIRT housing by pulling it up and away from the bottom of the baseplate.
- 4 Remove the batteries and discard them.
- 5 Replace the batteries with new 9-volt batteries (Duracell MN1 604, or Eveready 522). Attach the battery leads and set the batteries into the transmitter body.
- 6 Re-attach the PIRT housing to the backplate.
- 7 Test the PIRT to be sure it operates properly (see page 32).
- 8 Take your system out of the DEMONSTRATION mode by pressing **Test/Demo** on the Central Controller. The system will automatically return to normal operation if no activity occurs within 10 minutes while in the DEMONSTRATION mode.



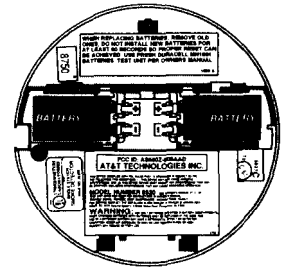
# Testing and Maintenance

## Replacing Smoke Detector Batteries

Batteries should be replaced annually or when low. See page 32 for the procedure used to test the transmitter battery power and operation.

To Replace Batteries:

- 1 Remove the smoke detector from the mounting bracket by pressing the black tab on the side marked **PRESS**. Lift the detector away from **PRESS** and lift up until the top is free from its hook.
- 2 Remove both old batteries and discard them.
- 3 Wait at least one minute before inserting new batteries. This allows the Low Battery detector in the transmitter to reset. Replace the batteries with two 9-volt batteries (Duracell MN1604 only). Insert the batteries with leads pointed to the center of the transmitter, as shown in the figure at the right.
- 4 Re-attach the detector to the mounting bracket by hooking it at the top, then swing the bottom down until it snaps into place (you may need to press the detector into the bracket at both top and bottom).
- 5 Test the detector to be sure it operates properly.



**NOTE:** Different manufacturers make 9-volt alkaline batteries in slightly different case sizes. To ensure proper fit and performance in your smoke detector, You should use only Duracell MN1



# Testing and Maintenance

---

## Replacing Wireless Siren/Controller Batteries

- 1 Go to the Wireless Siren/Controller and remove the cover by lifting it up and away from the bottom.
- 2 Remove the old battery and replace it with a new one (Duracell MN1604 or Eveready 522).
- 3 Press **Cancel** for 1 second (you will hear a chirp) to reset the low battery sensor in the Wireless Siren/Controller.
- 4 Replace the cover securely.

# Testing and Maintenance

---

Your AT&T Security System 8000 requires very little maintenance. All you will normally need to do is replace its batteries whenever they run low. YOU SHOULD ALSO TEST YOUR SYSTEM WEEKLY-WITH AND WITHOUT AC POWER-TO BE SURE EVERYTHING WORKS PROPERLY.

## Weekly System Test

Perform the following test procedure every week; once with the Central Controller plugged in and once with the Central Controller unplugged. This will ensure that the backup batteries operate properly.

- 1 Enter your security code on your keypad. Press **Off**. Your system is now set to **OFF**.
- 2 Within 2 minutes of setting your system to **OFF**, press and hold **Test/Demo** on your Central Controller for 3 seconds until a decimal point appears in the display. Your system is now in the DEMONSTRATION mode.
- 3 Enter your security code on the keypad and press **Away**.
- 4 Go to each transmitter and cause it to set off an alarm. (Open the door or window, activate its motion or smoke detector, or otherwise trip its sensor.)

In the DEMONSTRATION mode, the alarm you hear will not be as loud as a normal alarm. (The automatic telephone dialer and any external sirens will be deactivated and the volume on internal sounders will be lowered.) The pattern of the alarm you hear should correspond to the type of alarm you triggered-fire, intrusion, environmental, or auxiliary (see page 10).

*(Continued)*

# Testing and Maintenance

---

*(Continued)*

After a fire, environmental, or auxiliary alarm, the system will normally not respond to the same type of alarm again for about 5 minutes. (See "Automatic Disarm Period," page 12.) But in the DEMONSTRATION mode, this disarm period is only 2 minutes.

- 5 After you hear the alarm sound, cancel the alarm by entering your security code on the keypad of any transmitter.
- 6 Repeat for each transmitter in your system.

**NOTE:** The Passive Infrared Transmitter (PIRT) sends an alarm signal when it first detects motion and will not send another until it resets itself. The PIRT will reset itself only after it does not detect any motion for 2-1/2 minutes.

- 7 Enter your security code on your keypad and set your system to the mode you want. (It is currently set to the **AWAY** mode.)
- 8 Press **Test/Demo** on your Central Controller once to take the system out of the DEMONSTRATION mode. Your system is now in the mode you selected in step 7.

*(Continued)*

# Testing and Maintenance

---

If any of the transmitters fails to trigger an alarm, and the cause is not obvious, call your dealer immediately.

If you forget to take the system out of the DEMONSTRATION mode, it will reset itself in about 10 minutes.

**NOTE:** When you are done testing, be sure to restore AC power to your Central Controller. The power transformer should be secured to the outlet

# Warranty

---

## Important

AT&T does not provide a warranty on these products to consumers. Consumer warranties and maintenance arrangements are provided only by the dealer who installed your system and who is best equipped to maintain it. You should inquire of your dealer as to the nature and extent of the dealer's warranty and maintenance agreements, if any. **There are no obligations or liabilities on the part of AT&T for loss of use of these products, or property damage or any other incidental or consequential damages arising out of or in connection with the use or performance of these products. AT&T makes no guaranty or warranty, including any implied warranty of merchantability or fitness regarding these products.** Some states do not allow the exclusion or limitation of consequential damages, so the above limitations or exclusions may not apply to you.

AT&T Security Systems  
5 Wood Hollow Road  
Parsippany, New Jersey 07054

# FCC Information

---

## FCC Registration and Repair Information

Your new AT&T product has been registered with the Federal Communications Commission (FCC). This product complies with standards in Part 68 of the FCC Rules. The FCC requires us to provide you with the following information.

### 1 Connection and use with the nationwide telephone network

The FCC requires that you connect your product to the nationwide telephone network through a modular telephone outlet or jack. The modular jack to which this equipment must be connected is a USOC RJ-31x.

This equipment may not be used with Party Line Service or Coin Telephone Lines.

### 2 Notification to the Telephone Company

Upon request of your local telephone company, you are required to provide them with the following information:

- A The "line" which you will connect the telephone equipment (that is, your phone number), and
- B The telephone equipment's FCC registration number and ringer equivalence number (REN). Those numbers are on the back or bottom of your telephone equipment.

# FCC Information

The REN is useful to determine how many devices you may connect to your telephone and still have them ring when you are called. In most, but not all areas, the sum of all REN's should be 5 or less. You may want to contact your local telephone company.

## **3 Repair instructions**

If it is determined that your telephone equipment is malfunctioning, the FCC requires that it not be used and that it be unplugged from the modular outlet until the problem has been corrected. Repairs to this telephone equipment can be made only by the manufacturer or its authorized agents or by others who may be authorized by the FCC. For repair procedures, contact your AT&T authorized security dealer.

## **4 Rights of the telephone company**

If your telephone is causing harm to the telephone network, the telephone company may temporarily discontinue your telephone service. If possible, the telephone company will notify you before interrupting service. If advance notice is not practical, you will be notified as soon as possible.

You will be given the opportunity to correct the problem and you will be informed of your right to file a complaint with the FCC. Your telephone company may make changes in its facilities, equipment, operations, or procedures that could affect the proper functioning of your telephone. If such changes are planned, you will be notified.

# FCC Information

---

## **Interference Information: Part 15 of FCC Rules**

Some telephone equipment generates and uses radio-frequency energy and, if not installed and used properly, may cause interference to radio and television reception.

Your AT&T product has been tested and found to meet the standards for a Class B computing device, as specified in Subpart B of Part 15 of the FCC Rules. These specifications are designed to provide against such interference in a residential installation. However, there is no guarantee that interference will not occur in a particular installation.

If your AT&T product causes interference to radio or television reception when it's in use, you might correct the interference with any one or all of these measures:

- 1 Where it can be done safely, re-orient the receiving television or radio antenna.
- 2 To the extent possible, relocate the television, radio, or other receiver with respect to the telephone equipment.
- 3 Plug your radio or television into an AC outlet that is not on the same circuit as your security system.
- 4 If you need assistance, call your AT&T authorized security dealer.



# Index

---

## Alarms (see also Trouble Beeps)

- Ambush, 13
- Automatic disarm period, 12
- Cancelling, 12
- Environmental, 10
- Fire, 10
- Intrusion, 10
  
- Panic, 2, 8, 13
- Tamper, 21, 28-32
- Ten minute maximum, 11
- Triggering, 13

## Ambush Alarm, 13

## Arming the system, 7

## Automatic Disarm Period, 12

## Batteries, replacing

- Keypads, 28
- Passive Infrared Transmitter (PIRT), 29
- Supervised Smoke Detector, 30
- Universal Transmitter, 28
- Wireless Siren/Controller, 31

## Cancelling an Alarm, 12

## Central Controller, 12, 14-16, 18-19

- Digital display, 12, 14, 16, 18
- Indicator lights, 15, 19

## Disarming the system, 8, 20

## Displays

- Digital, 12, 14, 16, 18
- Indicator Lights, 15, 19

## Doors or windows, opening, 9

## Emergency Procedures, 1

- Evacuation, 4
- Fire protection, 3
- Safety, 2

## Environmental Alarm, 10

## Evacuation Procedures, 4

## FCC Registration and Repair Information, 36-38

## Fire alarm, 10

- NFPA Recommendations, 23-24

## Fire protection, 3

# Index

---

ID numbers for transmitters, back cover

Indicator Lights 15, 19

Intrusion Alarm, 10

Keypad, Wireless System

Operation, 6, 20

Battery replacement, 28

Keypad, Wireless Local

Operation, 21

Replacing batteries, 28

Maintenance, 28-34

Modes

Away, 5-7, 15, 18, 21, 26

Delay, 21

Demonstration, 28-34

Home, 5-6, 8, 15, 18, 21

Instant, 21

Off 6, 8, 18, 21

Monitoring service, 10-13

Operation Procedures, 5-9

Leaving home, 7

Opening door or window, 9

Returning Home, 8

Turning system on (arming), 7

Turning system off (disarming), 8, 21

Panic Alarm, 2, 8, 13

Passive Infrared Transmitter (PIRT)

Operation, 26

Battery replacement, 29

Quick Reference, inside back cover

Safety Procedures, 2-4

NFPA Recommendations, 23-24

Security Code, 6, 13, 20-21

Sensors, 5

Interior, 5, 21

Perimeter, 5

24 hour, 5, 21

# Index

---

## Smoke Detector

- Operation, 22
- Battery replacement, 30
- Trouble Beeps from, 22

## Tamper Alarm, 21, 28-32

## Testing the system, 32-34

## Transmitters

- ID Number List, back cover
- Passive Infrared, 26
- Universal, 25

## Trouble Beeps

- From the Central Controller, 10, 14-16
- From the Wireless Siren/Controller, 17
- From the Supervised Smoke Detector, 22

## UL Requirements, 24

## Universal Transmitter

- Battery replacement, 28
- ID number list, back cover
- Operation, 25

## Warranty Information, 35

## Wireless Local Keypad

- Operation, 21
- Replacing batteries, 28

## Wireless Siren/Controller

- Battery replacement, 31
- Trouble beeps, 17
- Operation, 27

## Wireless System Keypad

- Operation, 6, 20
- Battery replacement, 28

# Quick Reference

---

Here is a brief guide to the operation of your AT&T Security System 8000. For more detailed instructions, see the Owner's Manual pages noted. Please pay special attention to the Safety Procedures (pages 2-4) which give important information not covered here.

## **When Leaving Home** (see page 7)

- 1 Enter your security code on the keypad attached to the door. The transmitter will beep 3 times in quick succession as the last number is entered correctly.
- 2 Press **Away**. The Central Controller will beep once.
- 3 Press **Open**. The transmitter will beep 3 times.
- 4 Go out the door and close it. The system will arm itself in about 40 seconds

## **When Returning Home** (see page 8)

- 1 Enter your home through a door that has been set for entry. The Central Controller will begin beeping once every 3 seconds.
- 2 Enter your security code within 40 seconds. This will cancel the delayed alarm.
- 3 Press **Home**. This will disable all the interior sensors.

## **Sounding a Panic Alarm** (see page 8)

Simultaneously press **both** sets of red dots on the keypad.

## **Turning Your System Off** (see page 8)

- 1 Enter your security code on the keypad. The system will beep 3 times.
- 2 Press **Off**. All intrusion sensors will be turned off. Fire alarms remain armed.

# Quick Reference

---

## Silencing Trouble Beeps from the Central Controller (see page 14)

- Press **Test/Demo** on the Central Controller.  
OR
- Press **Cancel** on your Central Controller.

## Silencing Trouble Beeps from a Smoke Detector (see page 30)

Replace battery in smoke detector.

## Silencing Trouble Beeps from the Wireless Siren/Controller (see page 17)

Press **Test/Demo** on the Central Controller. If this fails to silence Trouble Beeps, remove cover of Wireless Siren/Controller and press the **Cancel** button inside.

## Silencing Alarms (see page 12)

Enter your security code on the keypad.  
OR

- Press **Cancel** on your Central Controller

---

**NOTE:** The **Cancel** button on your Central Controller will not cancel an intrusion alarm.

---

## Opening a Door or Window When the System is Armed (see page 9)

- Enter your security code on a keypad and press **Off**.
- Open door or window.
- Enter your security code on a keypad and press **Home**.

# TRANSMITTER IDENTIFICATION NUMBERS

# DISPLAY CODES

ID	TRANSMITTER	ID	TRANSMITTER	ID	TRANSMITTER	MEANING
00		11		22		-A Away
01		12		23		-H Home
02		13		24		-O Off
03		14		25		AA Disarm Period
04		15		26		CC Central Controller
05		16		27		
06		17		28		
07		18		29		
08		19		30		
09		20		31		
10		21		IN CASE OF DIFFICULTY CALL		